

INSTRUCTIONS FOR CONTINUED AIRWORTHINESS (ICA'S)

► Instructions for Continued Airworthiness (ICA's) have become a common term in aviation maintenance. ICA's encompass Service Publications, Maintenance Manuals, Vendor Manuals referenced in the airplane maintenance manual, maintenance and inspection instructions provided by supplemental type certificate holders as well as the Cessna publications specifically titled "ICA" followed by the model number of the airplane for which they are applicable. It is the latter that many are not familiar with. These documents are a supplement to the airplane maintenance manual and provide the latest information when inspecting, troubleshooting or performing maintenance on the airplanes to which they are applicable.

Cessna has published various ICA's for all of the current production models of aircraft. The data in these ICA's covers information on maintaining and inspecting equipment or systems incorporated in production that have not been incorporated in the maintenance manual. It should be noted that this information may be incorporated in the maintenance manual in the future and when incorporated the maintenance manual will take precedence.

ICA's are available on the Cessview Ili DVD or CD-ROM digital publications or they can be accessed at cessnasupport.com through the customer access portal.

1.1.2. This supplemental document is designed to satisfy 14 CFR 23.1529 "Instructions for Continued Airworthiness" requirements associated with this installation. This document is a supplement to the Cessna Aircraft Company Model 172R/172S, 182S/182T/T182T, or 206H/T206H Maintenance Manual and may or may not be incorporated.

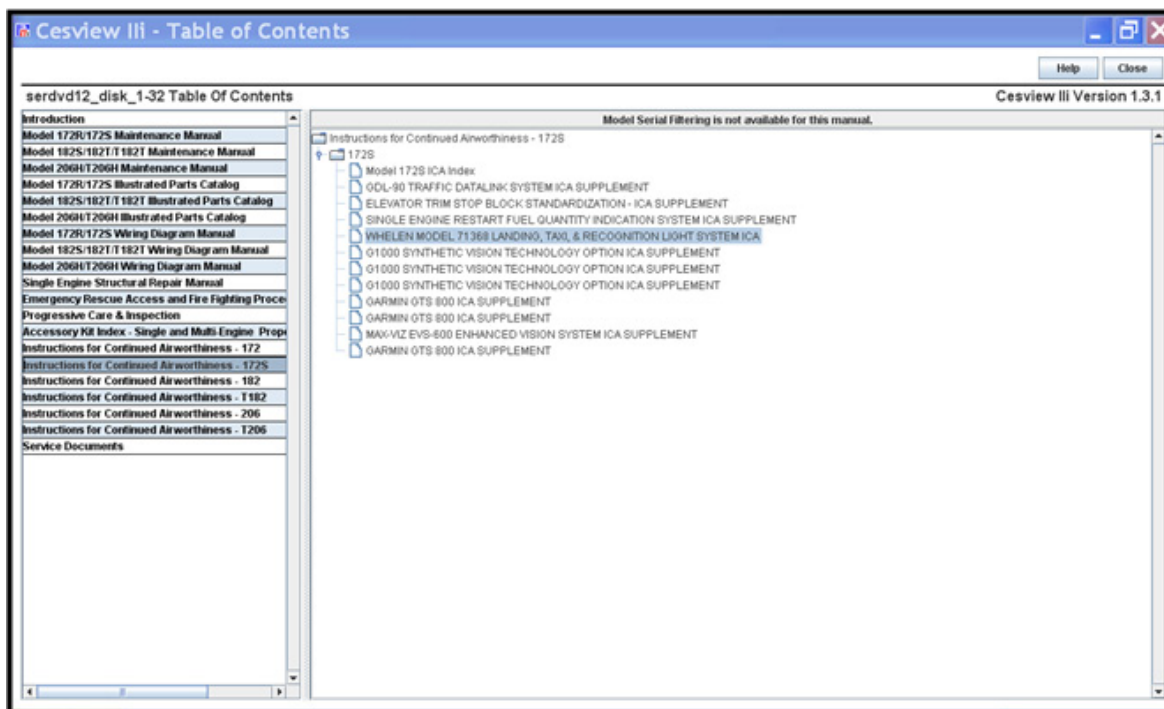
1.1.3. If this information is incorporated into the Model 172R/172S, 182s/182T/T182T, or 206H/T206H Maintenance Manual, the maintenance manual shall take precedence over this supplemental document. Refer to the application ATA chapter and section of the respective Maintenance Manual for the status of all ICA Supplements applicable to your model.

NOTE: This document must be placed with the aircraft operator's Technical Library CD-ROM or Maintenance Manual and incorporated into the operator's scheduled maintenance program.

Here is some guidance listed in the ICA that explains the reasons ICA's are developed and their relationship with the basic maintenance manual set for the aircraft model.

ICA's, con't.

Where are the ICA's in Cessna Publications?



The applicable Model ICA's are listed in the Cessview Ili maintenance manual set for the "Single Engine Restart" aircraft.

Publications				
Propeller Service Document Listing				
Document Number: ICA-172%				
Publication Number	Issue Date	Compliance	Title of Publication General Information	Reference Document
ICA-172-34-00002A	04/23/2012	Mandatory	Garmin GTS 800 Garmin GTS 800 ICA Supplement	
ICA-172-33-00001A	07/13/2010	Mandatory	Whelen Model 71368 Landing, Taxi and Recognition Whelen Model 71368 Landing, Taxi and Recognition Light System ICA Supplement Revision A	
ICA-172-34-00001	03/06/2009	Mandatory	G1000 Synthetic Vision Technology Option ICA Supp G1000 Synthetic Vision Technology Option ICA Supplement	
ICA-172-28-00001A	01/30/2009	Mandatory	Single Engine Restart Fuel Quantity Indication Sy Single Engine Restart Fuel Quantity Indication System ICA Supplement Revision A	
ICA-172-27-00001D	12/03/2008	Mandatory	Elevator Trim Stop Block Standardization ICA Supp Elevator Trim Stop Block Standardization ICA Supplement Revision D	
ICA-172-23-00001B	06/30/2008	Mandatory	GDL-90 Traffic Datalink System ICA Supplement GDL-90 Traffic Datalink System ICA Supplement Revision B	

The ICA's can also be found on the www.cessnasupport.com publication search page. Remember to use the "percent" % wildcard when using this search engine. It will make the search much more productive when you don't know the publication number.

